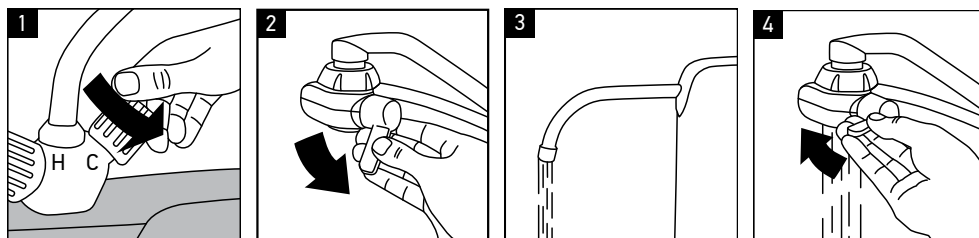


Regular use

1. To get purified water open the kitchen faucet (cold water only!). For optimal Bravo water filter performance maintain the cold water flow rate not above 2 l/min.
2. Turn diverter valve handle and filtered water will go out from the Bravo water filter.
3. High quality drinking water is ready for use.
4. To stop purified water supply just turn the diverter valve off. Tap water will go from the faucet bypassing the Bravo water filter. You can use the faucet as usual, cold and/or hot water as you want.



Changing filter element

This water filter contains the disposable filter element (Prio® K898) critical to the efficiency of the system. Replacement of the filter element should be with one of identical specifications, as defined by the manufacturer, to assure the same efficiency and contaminant reduction performance.

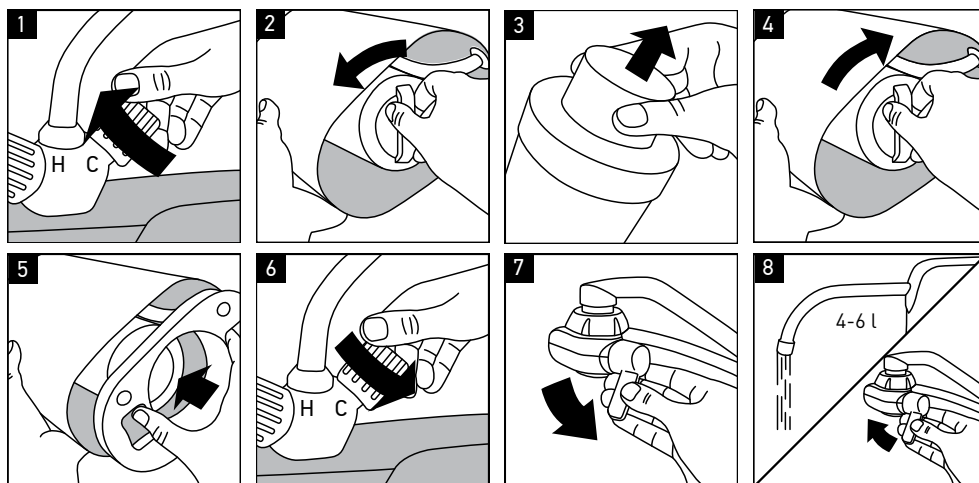
To ensure optimal filtration performance change the disposable filter element every 6 months or sooner if you observe a noticeable reduction

in water flow rate or chlorine or other tastes or smells. Please note the capacity of the filter element is limited. Its service life depends on the degree of contamination of the water supply and filter usage. All terms apply to normal household use. Actual performance may vary.

To prevent leakage or cracks and ensure the safety of operation and top performance do not disassemble the filter element or try to regenerate it.

To change filter element:

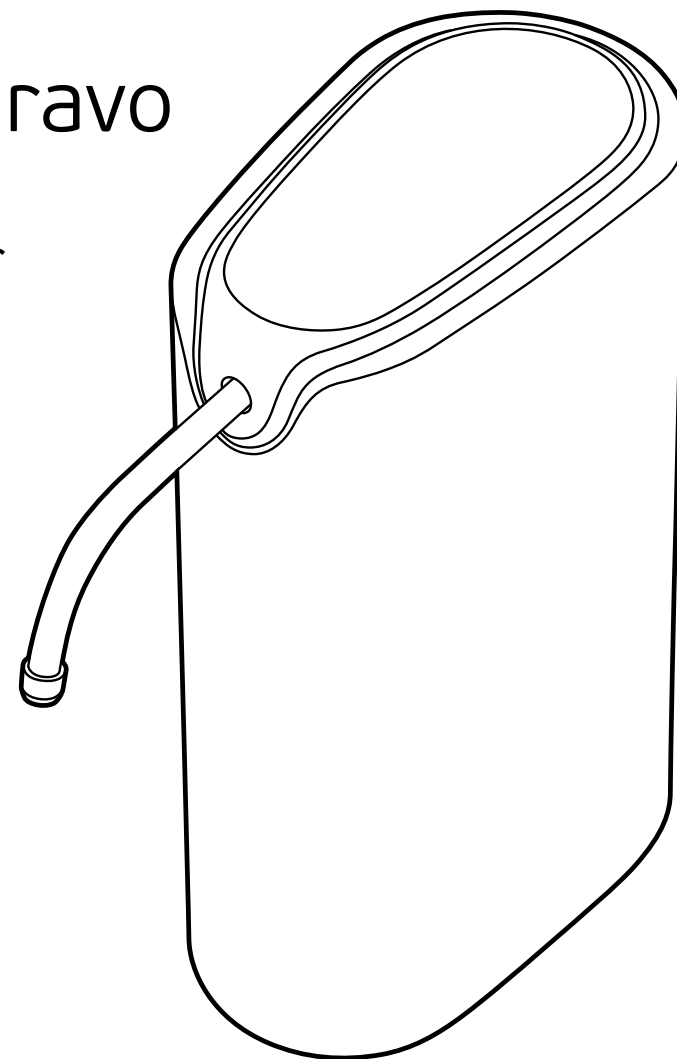
1. Shut off your kitchen sink faucet.
2. Take filter hanging it above the sink. Take off the bottom lid, then turn the filter element counter-clockwise. Remove the disposable filter element.
3. Take new K898 filter element, remove packaging and cap.
4. Install new filter element: plug it into the housing and turn clockwise.
5. Replace the bottom lid. Place the filter near the sink.
6. Open the kitchen sink faucet (cold water only!).
7. Open the diverter valve and check for leaks.
8. Perform the initial washing for 2-3 minutes. Shut off the diverter valve and kitchen faucet. Your Bravo water filter is ready to use!



prio®

Prio® Bravo

Countertop Water Filter



User's Guide

Before operating this appliance, please read the instructions carefully. You may want to save this guide for your future reference. Failure to follow the instructions or meet the operating requirements may lead to the product's failure, malfunction, property damage or personal injury.

Safety Warning



- Do not use the appliance if operating requirements such as water temperature/water pressure, etc. are not met. There may be other local regulations to comply with.
- Do not use the appliance with water that is microbiologically unsafe or of unknown quality without adequate disinfection before or after the system.
- Never store or operate the appliance in direct sunlight.
- Keep the appliance out of reach of pets or other animals.
- This appliance is not intended for use by persons (including children) with reduced physical, sensory or mental capabilities, or lack of experience and knowledge, unless they have been given supervision or instruction concerning use of the appliance by a person responsible for their safety.
- Children should be supervised to ensure that they do not play with the appliance.
- At the end of its life, the appliance should be disposed off in an appropriate manner.

Disposal



Old appliances still contain many recyclable materials. Therefore, please take used unit to your retailer or recycling center so that it can be recycled.

Description

Congratulations on your purchase of the Prio® Bravo Countertop Water Filter! With proper installation and maintenance, it will provide you with high quality drinking water for many years.

This water filtration system removes sediments, including 10-100 nanometer-scale sediments such as pollen and microplastics, protists, odor and most harmful substances such as chlorine from tap water making it safe, tasty, fresh and vital. Please familiarize yourself with the general concept behind the product and main modes of operation.

Key features

- Multi-stage filtration:
 - sediment poly pre-filter
 - coconut shell granular activated carbon
 - ultrafiltration hollow fiber membrane
- Quarter-turn bayonet easy-change filter element
- Quick setup without tools
- Multi-mode diverter valve included
- Fits virtually any kitchen sink faucet
- Modern look that matches any kitchen style

Technical specification

- Recommended production rate: up to 0.5 gpm (2 l/min)
- Size (WDH), body only, excluding protrusions: 6.89 x 3.70 x 10.43" (175 x 94 x 265 mm)
- Weight, without water and tubing: 2.6 lbs (1.2 kg)

Operating requirements

- Minimum supply water pressure: 15 psi (0.10 MPa)
- Maximum supply water pressure: 100 psi (0.69 MPa)
- Minimum water temperature: 41 °F (5 °C)
- Optimal water temperature: 50–68 °F (10–20 °C)
- Maximum water temperature: 95 °F (35 °C) / up to 105 °F (40.5 °C) short-term
- Ambient air temperature: 41–105 °F (5–40.5 °C)
- Water source: tap water supply, chlorinated or non-chlorinated, bacteriologically safe
- Indoor use only

Package contents

- (1) Bravo water filter with installed filter element
- (1) Filtered water faucet
- (1) On-tap diverter valve
- (1) Universal adapters kit
- (1) User's guide

Warranty

1 year worldwide limited warranty (+ local regulations if applicable)

Installation

1. Place filter in a convenient location on the counter where you have enough water line length to attach diverter to your kitchen sink faucet.
2. Insert filtered water faucet into the filter housing.
3. Shut off your faucet where filter will be installed.
4. Remove aerator from the faucet.
5. If needed, connect plastic tubing to the diverter valve.
6. Included adapters kit fits virtually any faucet and needs no tools. Determine type of thread on your sink faucet:
 - 6a. Outside Thread: Select the proper adapter and washer (included) and screw it into the sink faucet. Tighten by hand or coin.
 - 6b. Inside Thread: Select the proper adapter and washer (included) and screw it into the sink faucet. Tighten by hand or coin.
 - 6c. No Thread: Use a special included 4-screws adapter.

Note: Adapters are included which will fit most sink faucets, except non-standard faucets.

- To create a tight seal, you may need to use a gasket from your sink faucet's aerator in addition to the washers included with the adapters. If the adapters do not fit, consult your local plumbing or hardware supplier for assistance in obtaining the correctly threaded adapters.
7. Take off a swivel collar from the diverter valve and connect it to your kitchen faucet, using suitable adapter.
 8. Attach diverter valve to the sink faucet, turning swivel collar to tighten. Make sure that gasket inside diverter is positioned securely between the diverter valve and the faucet. Rotate diverter valve to a desired position. Swivel collar may need to be re-tightened.
 9. Turn on cold water, it will go through the sink faucet as usual. To get purified water turn diverter handle, this will cause water to go through the filter. Check all connections for leaks.
 10. Perform the initial washing for 2-3 minutes. To stop water flow through the filter, turn diverter handle off, then turn off water at the sink faucet. Your Bravo water filter is ready to use!

